



Notes Rnext Technical Overview

by
Craig
Lordan

Level: All
Works with: Rnext Preview Build 1
Updated: 01/22/2001

Please note: This technical overview is a draft. It will be updated with each new preview or beta release, resulting in a finished article with the gold release of the next major release of Notes/Domino.

This article provides you with a technical overview of the new features and enhancements in Notes Rnext Preview Build 1. For more details on new features, we suggest you read the Preview Build 1 release notes and the "What's new in this release?" topic in the Preview Build 1 Help database .

The design goals for Notes Rnext are as follows:

- Improved ease of use
- Premier mail and calendar & scheduling client
- Strengthened replication and mobility features
- Continued focus on collaboration
- Enhanced performance
- Streamlined deployment and administration

The following sections highlight some of the new features, enhancements, and changes that support these design goals.

Ease of use

The following enhancements contribute to improving Notes' ease of use.

Connectivity Wizard

The Connectivity Wizard (final name to be determined) allows you to easily configure (and later, reconfigure) your Notes client without forcing you to create a single connection, account, or location document on your own.

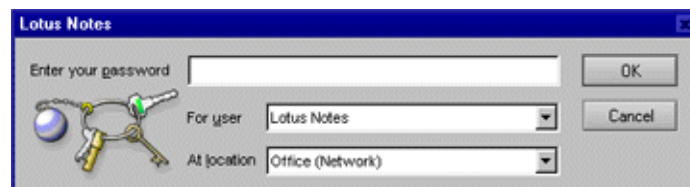
The Connectivity Wizard allows you to:

- Connect to Domino, POP, or IMAP mail
- Convert Eudora or Outlook Express mail to Notes mail
- Add LDAP Internet directories (LDAP) to your personal address book
- Connect to newsgroups
- Schedule replication

The Connectivity Wizard can be run again at any time to modify existing connections or add new ones.

Login dialog

The login dialog now allows you to choose a different user ID and/or location before you enter your password:

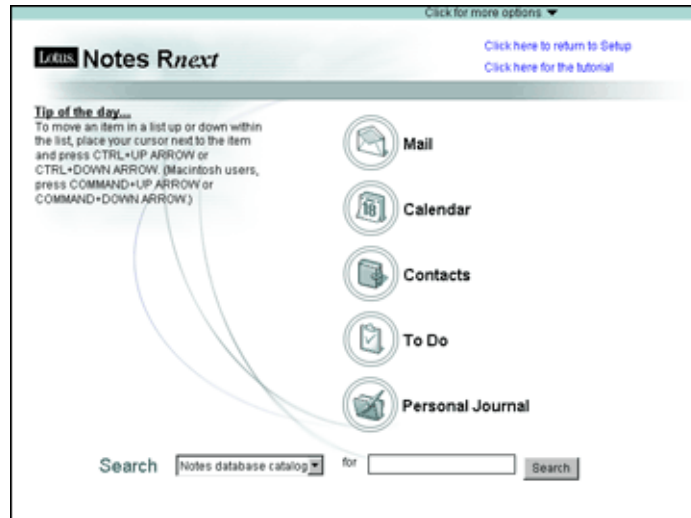


Login dialog

Welcome Page

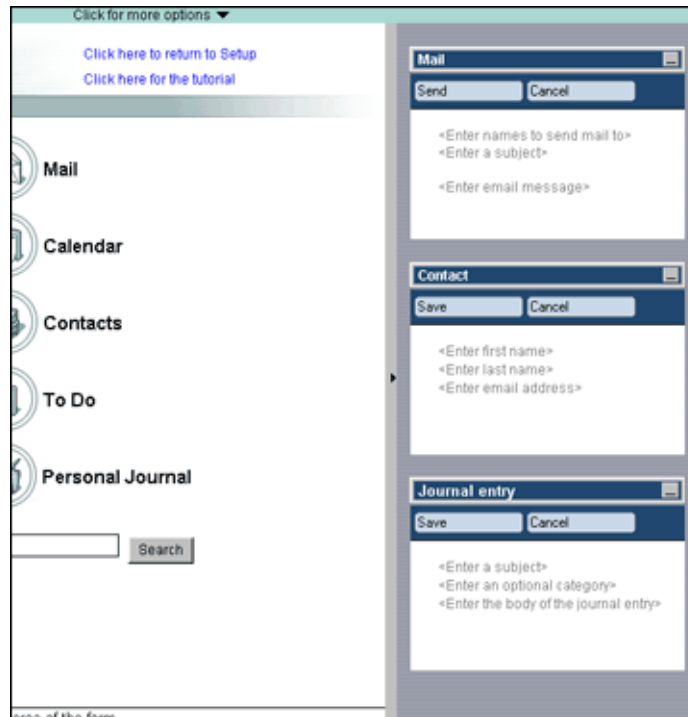
Notes R5 introduced the Welcome Page, which provides instant access to the things that are most important to you—mail, calendar, to do list, Web

pages, whatever you want. For Notes Rnext, the default Welcome Page is being redesigned with a new look. Here is the current look for Preview Build 1 (this design may be subject to change):



Plus, the Welcome Page has many new features, including:

- An enhanced Welcome Page Wizard that makes it even easier to customize and personalize your Welcome Page.
- A "Tip of the Day" that shows handy information about using the Notes client.
- Increased content types, such as Notes database views and access to directories on the file system.
- On framed welcome pages, dynamic switching of frame content, for example, switching from your inbox to your calendar within same frame.
- Action buttons are now available on the Welcome Page, for example, to create a new mail memo or calendar entry.
- A preview pane, similar regular Notes databases.
- Quick Notes, on the right-hand side of the screen, which allow you to create mail, contacts, and journal entries without having to open the respective databases, as shown below:



Quick Notes

Bookmarks

Bookmarks now include two new folders: a Startup folder and a History folder.

The Startup folder allows you can bookmark items you want to open a window when you start Notes. To help with performance, Notes doesn't actually open the item, for example, a database, until you click the open window.

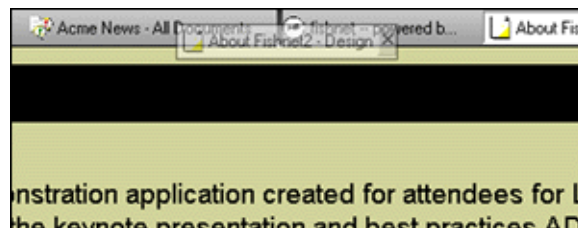
The History folder shows you what you have opened in your client, both today and over time.

Bookmarks now support drag and drop throughout. You can also now select and manipulate multiple bookmark items, for example, so you can select and open three databases.

And you can now bookmark items from the file system, such as Lotus Freelance files, Microsoft Word documents, even system folders.

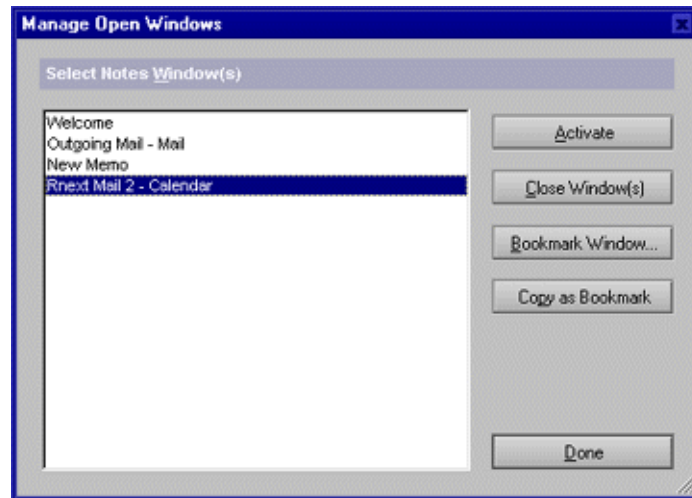
Windows tabs and menu

R5 added the new Window tab across the top of the screen, showing you all your open windows in Notes. In Rnext, you can now use your mouse click, hold, and drag to reorder these tabs as you want, for example:



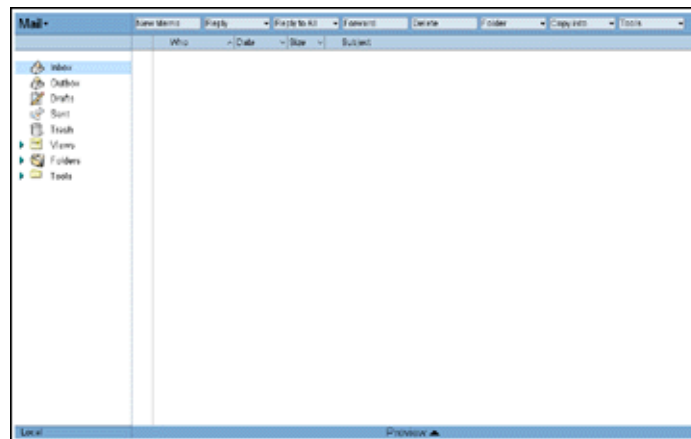
The new Windows menu is reminiscent of the old R4 Windows menu. The Rnext menu improves accessibility, allows you to manage all your open

windows, plus provides a choice to display a dialog box to manage and bookmark your open windows:



Mail and Calendar & Scheduling

Mail has been enhanced with several new useful features. Your Inbox view can now be easily customized, for example, you can move the columns frames and preview pane borders and your changes are saved (this feature actually applies to all databases, not just mail). Rnext adds an Outbox view that opens the Mail Router Mailbox database (mail.box) so you can manage pending mail. And Notes now has a "Reply with Internet-Style History" capability.



Rnext includes many enhancements to file attachments within mail. In release 5.0.1, you could create attachments by dragging and dropping them from the file system into a new mail message, now, Rnext allows you to drag and drop files to the file system in order to detach them. Changes to "Reply with History" now allow you to better manage attachments you receive—this option now removes attachments and annotates the removal. If you do want to reply with attachments intact, you can choose the new "Reply with Full History." And when you choose to save an attachment, Notes now shows a progress bar (because saving attachments takes advantage of Notes' new multitasking capabilities. More on that in the Performance section that follows).

Plus, the Attachments menu, properties box, and right mouse menu have been updated so they are easier to use. The "Launch" and "Detach"

options have been renamed to the more obvious "Open" and "Save." There is also a new "Remove" option.

Calendar and Scheduling in Notes Rnext includes many useful improvements and changes. For example, the calendar entry form is being redesigned so that it includes more tools directly on one form. For example, in Preview Build 1, the calendar entry form now includes a "Check Schedule" tab directly on the form so you can easily see the availability of all invitees, and scroll the proposed meeting time until a suitable time is found.

Other additions to the form include personal notes, rooms and reservations, and Sametime online meetings. Here is a look at the form in Preview Build 1 (this design is still being tested and may be subject to change):

Once you create entries, you will be able to edit them at view level, rather than having to open the entry document. (And the new ability for view-level editing applies to all databases, not just in the calendar.) For example, you can change the start and end times of a meeting by dragging the entry box. You can also create appointments right from the view level, rather than opening the full entry form. Calendar entries in views are now color-coded, so you can tell a meeting from an appointment or a reminder, right from the view level. (The color scheme will be configurable per user or per design—you can even use it in Mail to color-code different types of messages.) Also, in certain views such as the new two-day view, calendar entry conflicts appear side-by-side, rather than one on top of each other as in previous releases.

Time zone support has been improved so you can choose a different time zone when you pick the start and end times for meetings. You can also now schedule meetings that run past midnight, and show two time zones at the view level.

Calendar delegation has been improved with the new Enterprise Calendar Management features (this exact name may be subject to change). These features enable a person to assign full calendar delegation to someone else, and have them manage their calendar on their behalf. For example, assume you manage Al Zollar's calendar. You can create meeting invitations for him, and all the meeting replies will be returned to you as the calendar manager. This means you can manage Al's calendar without working in his mail database, and he can simply use his calendar to see all his appointments without dealing with responses.

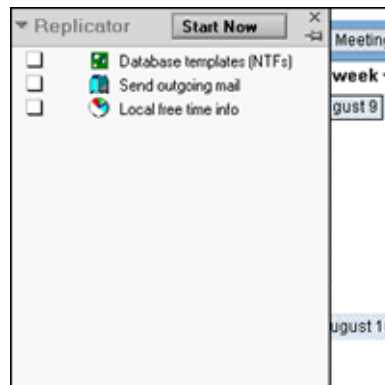
Further C&S features include:

- iCalendar and vCard support

- Several new day, week, and month views
- New "Summarize" option to summarize all the entries in a view, which you can then print
- Month and year in the date picker are now clickable so you can quickly change either the month or year, or both
- Scroll bar at the bottom of the screen to quickly move to other dates in the view you're in

Replication and Mobility

The Replicator page in Rnext is another area where you will see big ease-of-use changes and improvements. The first thing you will notice is that the layout has been reworked—for example, you can choose large or small icons, plus you can also display the page as a bookmark-page style "slide-out":



You can now easily create replicas (and selective replicas) by dragging and dropping databases, views, or documents on to the page. For example, if you drag a view to the Replicator page, you can create a selective replica containing only the documents that appear in that view—no more replication formulas required!

The new page allows you to organize database icons into folders, which then allows you to perform replication activities on everything in one folder. Plus, you can sort the Replicator page columns, select multiple icons on the page. Finally, the new progress meter that shows more information about databases and documents.

As for replication, a major enhancement is the way replication of documents within databases is handled. For example, documents are re-ordered so that smaller documents are replicated first. Then, replica views are built dynamically, so as documents are replicated they appear right in the view, which means users can act on information more quickly.

For mobility improvements, Rnext includes two new capabilities called **Roaming User** and **Multi-user**. Roaming user allows users to have their information "follow" them, no matter what PC they are using. Personal information (such as Welcome Page, Bookmarks, address book, preferences, journal, and ID file) is stored on servers and replicated to whatever PC someone happens to be using. Multi-user is the flip side of roaming users; it allows multiple users to easily share one specific Windows OS PC, so they can access personal data as well as common information.

Collaboration

A powerful new collaboration tool in Notes Rnext is the ability to lock and unlock documents. Users with at least Author access can lock documents on any replica, preventing others with the same access from modifying the

document, even if they are working on a different replica. Even Managers of a database cannot edit a locked document (although they can unlock documents).

Performance

The most noticeable performance improvement for Notes Rnext is that many features are now "multitasking," meaning you can do "something else" while the Notes client is busy performing an operation in the background. Activities such as polling for new mail, detaching files, replication, printing, monitoring alarms, subscription processing, agents, replacing designs, and copying databases take advantage of the new Rnext multitasking abilities.

Other Notes Rnext client performance improvements include:

- Better memory usage. We expect Rnext to consume less memory overall than the R5 client.
- Notes network data (NRPC) can now be compressed.
- More end-user control concerning selective replication and management of file attachments.
- Increased file detachment speed.

Administration

At the beginning of this overview we discussed changes to the Welcome Page. For administrators, customizing and deploying an organizational Welcome Page is even easier, with the availability of the new Rnext Corp Welcome template (corpwelc.ntf), combined with the new administration desktop policy features. You can design a Welcome Page, push it out to users, and even lock it down.

In general, beyond just the Welcome Page, the new policy documents will be a useful tool for Notes client administrators, because they are designed to let you enforce standard settings and configurations across groups, departments, or even entire organizations.

You will be able to use the new Smart Update feature in Rnext to control version deployment (This feature is not available in Preview Build 1). Each time a user logs on to Notes, Smart Update checks to see if a newer version of the client software is available on your Smart Update server. Users are then asked whether they want to get an update immediately or later on.

And in conjunction with the new Roaming User and Multi-user features, there is a full set of tools administrators can use to create and manage these types of users. For example, the new policy documents and person documents contain information specific to Roaming users, plus there is an upgrade tool to move existing users into being Roaming users.