



Lotus Extended Search Lotus Discovery Server



A05

Lotus Knowledge Management Portfolio

PORTFOLIO

KNOWLEDGE DISCOVERY

PLATFORM

Collaborative Content Management Platform

Discovery Platform

OFFERING

Domino.Doc

Workflow

Discovery Server

Extended Search

EXISTING SOLUTIONS

Lotus Web Content Mgmt Solution

Lotus Records Mgmt Solution

Discovery Series: Deployment Services

KM for Drug Discovery

Intellectual Capital Mgmt

PROPOSED SOLUTIONS

Corporate Accountability

Communities of Practice

New Product Introduction

Decision Support

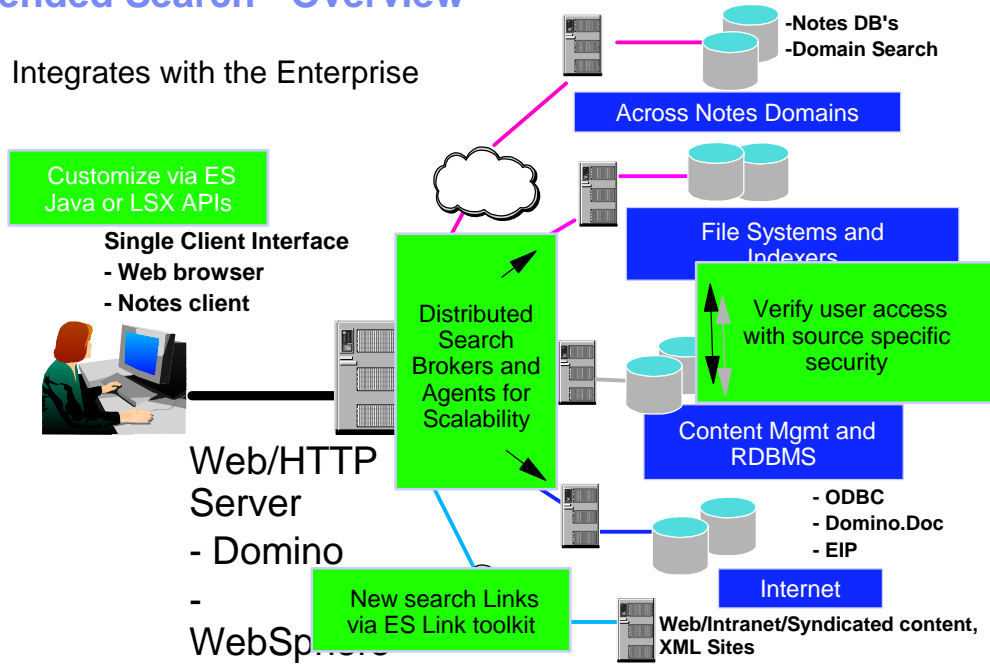
.....

Lotus Extended Search



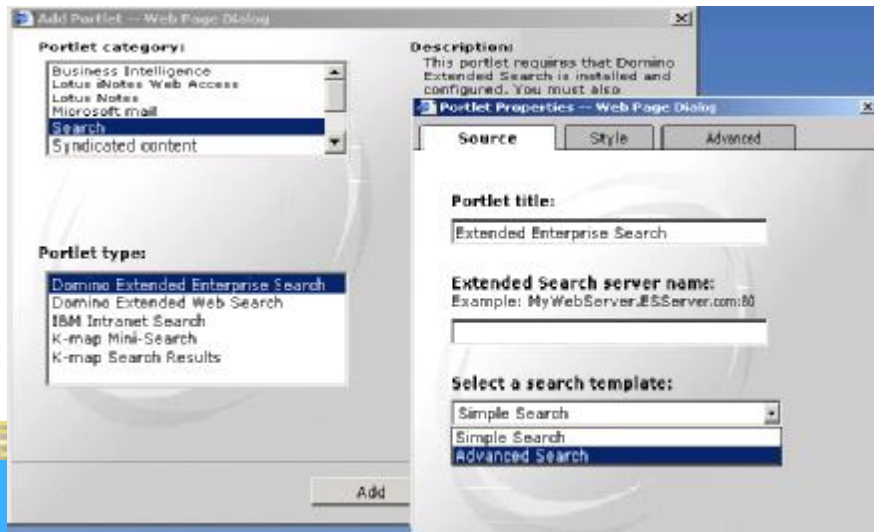
Extended Search - Overview

Integrates with the Enterprise



■ Supported today ■ In process ■ Planned

	Websphere Portal	Quickplace	ND6	other IBM SWG/ISV	Other Integration	3rd party vendors
Extended Search	<ul style="list-style-type: none"> 3 Portlets Ships with Extend and Experience Search link to WP search index (Juru) 	<ul style="list-style-type: none"> 4.0 will have a search link to QP3.0 	<ul style="list-style-type: none"> Search Mail and DBs 	<ul style="list-style-type: none"> DB2 WAS Java Ships with EIP 	<ul style="list-style-type: none"> (that's the whole point!) See product specs for sources 	<ul style="list-style-type: none"> Lexiquest Atlantic Decisions (Verity Search link)



IBM Lotus Extended Search Roadmap

2002

LES 3.7

- Search Links to MSFT Access and SQL Server
 - Data Configuration wizards
 - UI in 18 languages
 - Support for Websphere 4.x
 - LES Java API access to query results

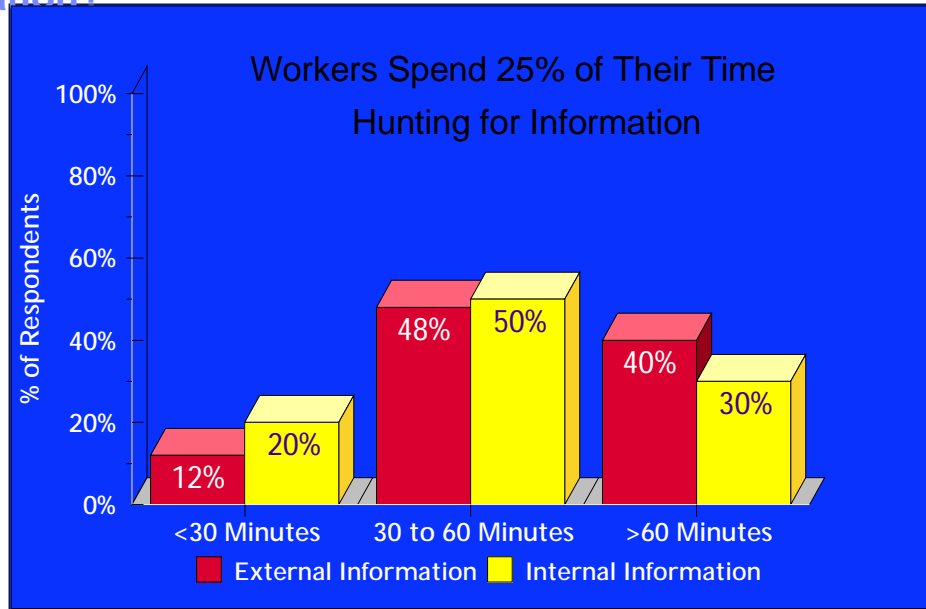
2003

LES 4.0

- New search links for Lotus Discovery Server, Sametime 3.0 and Websphere Portal Search Index.
- New platform support for Linux administration database support for Oracle.

Lotus Discovery Server

"How Many Minutes per Day Do You Spend Hunting for Information?"



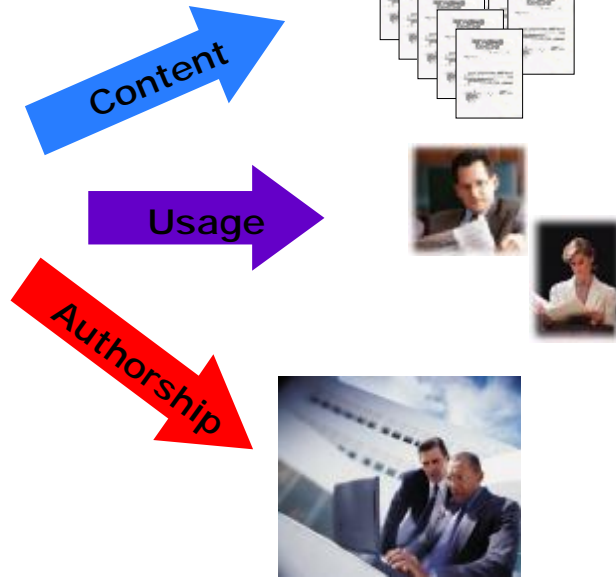
Lotus Discovery Server 2.0.1

Lotus Discovery Server

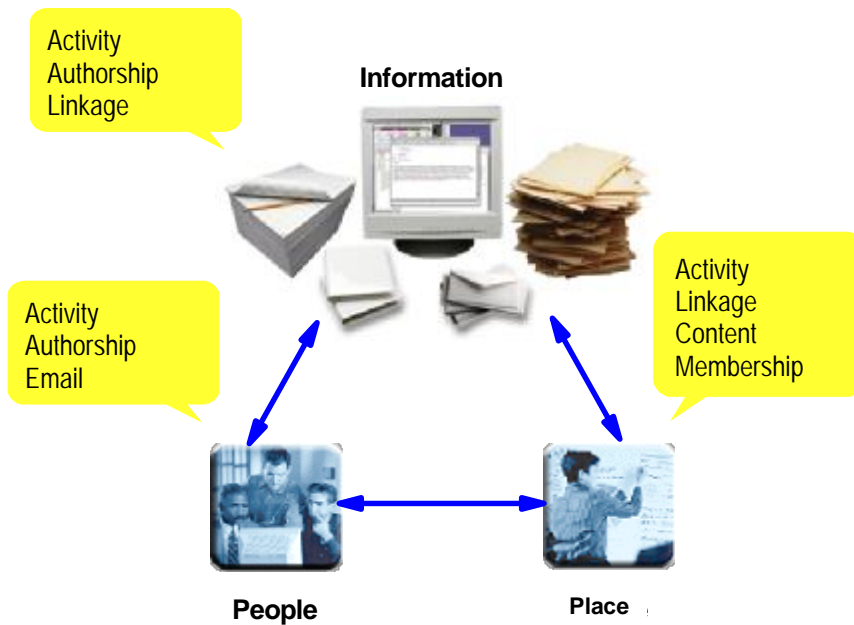
- SEARCH - Quickly search multiple sources of information throughout your organization
- EXPERTISE - Automatically associate subject matter experts with information resources
- CATALOGUE – Automatically capture and reuse information and intellectual assets
- Functions on a backdrop of collaborative tools that instantly link discovered people through online awareness and instant messaging.

What makes Discovery different?

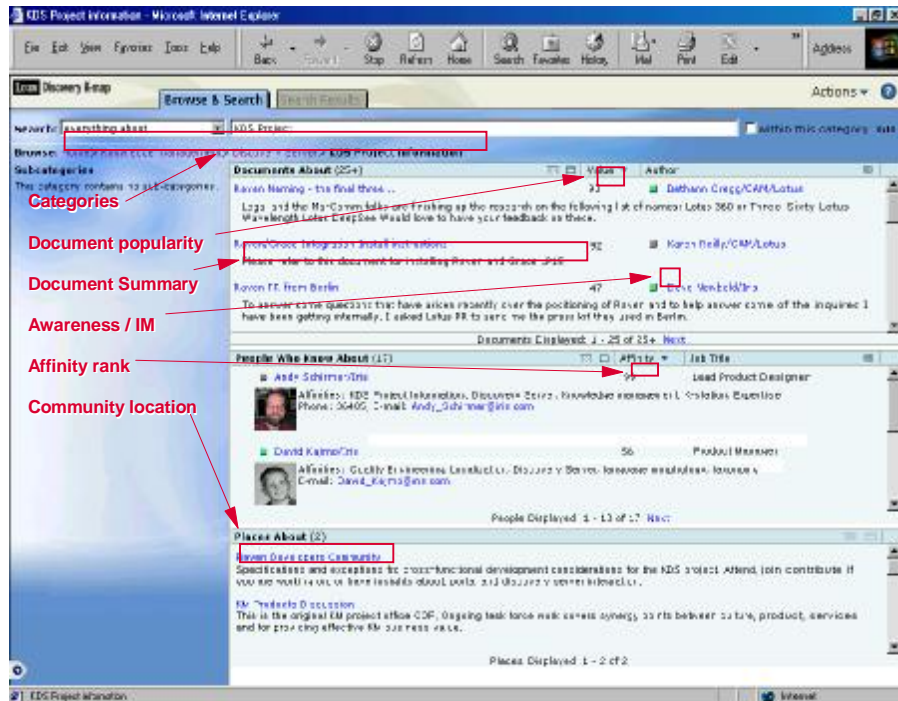
Discovery Tracks:



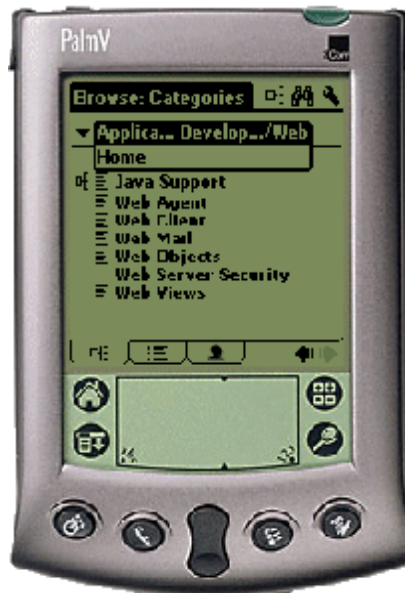
Metrics....tracking the digital breadcrumbs



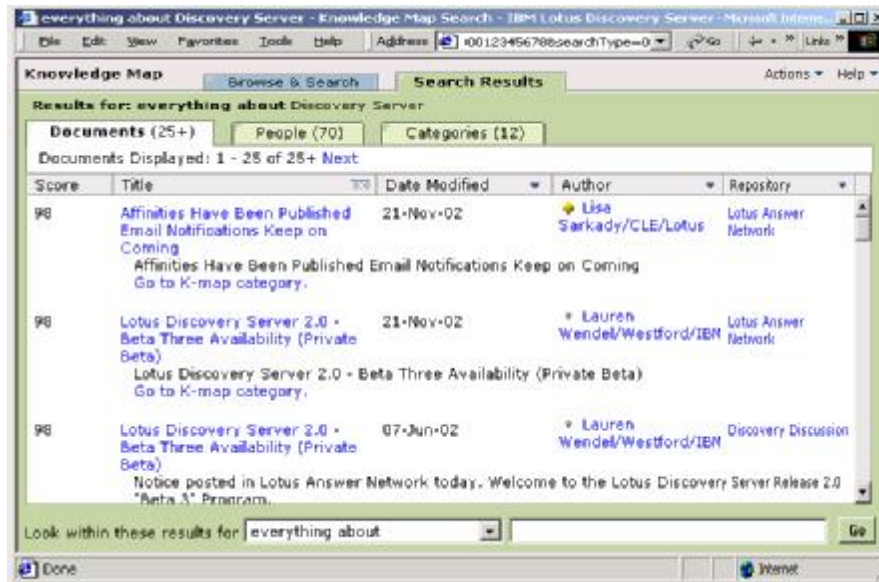
K-map



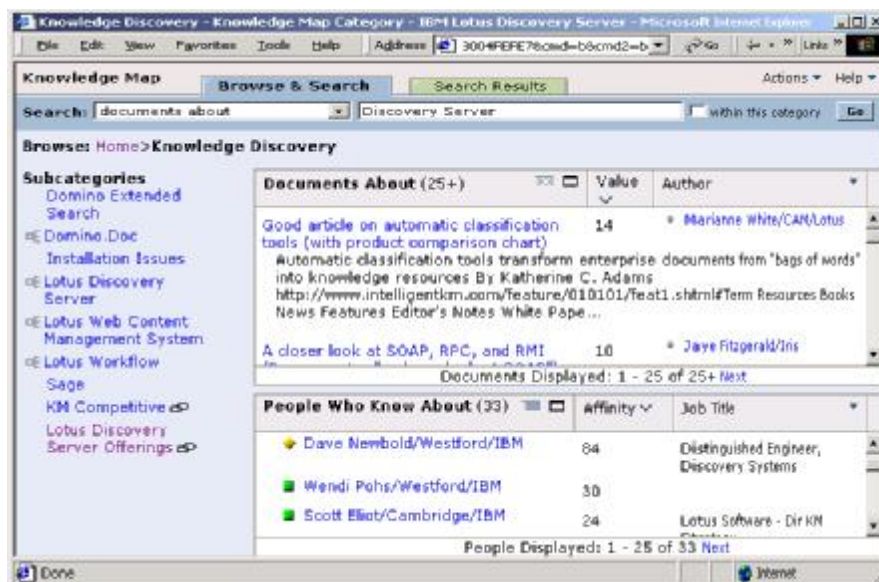
LDS Everyplace



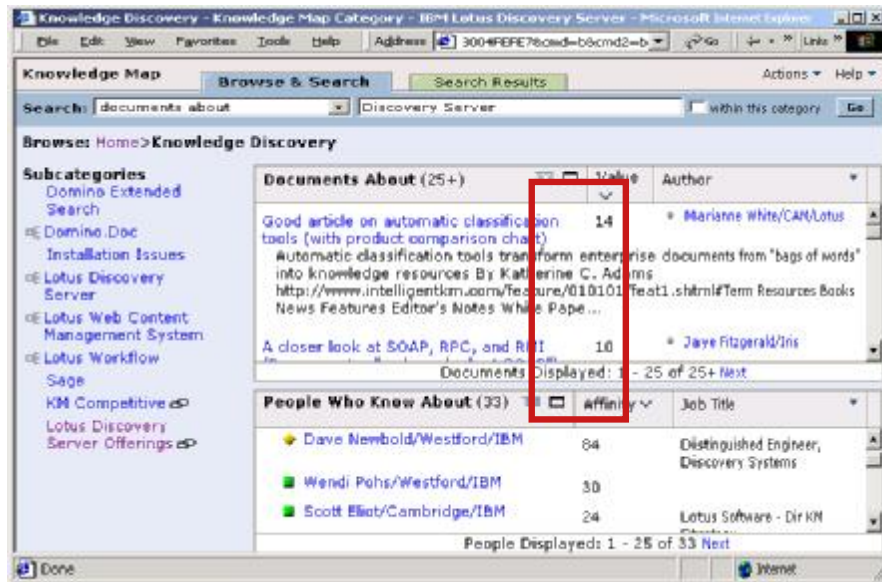
Finding documents (search)



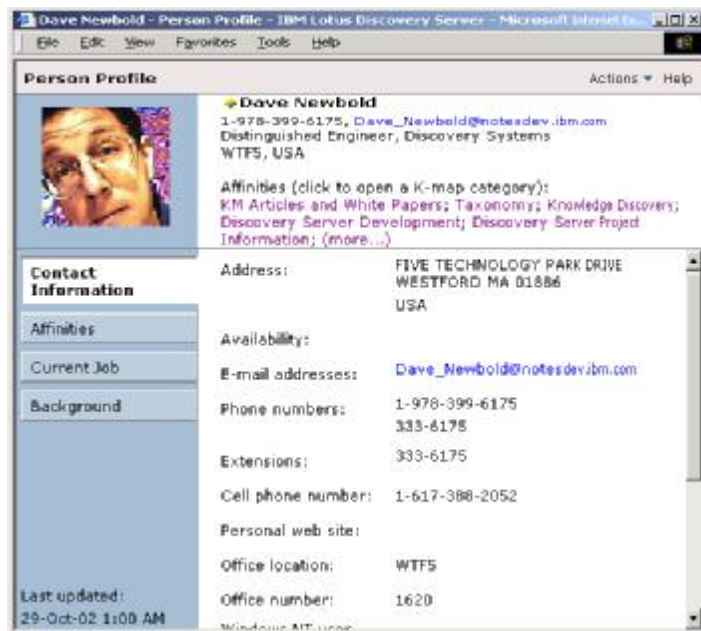
Finding documents (search) Sensemaking (browse)



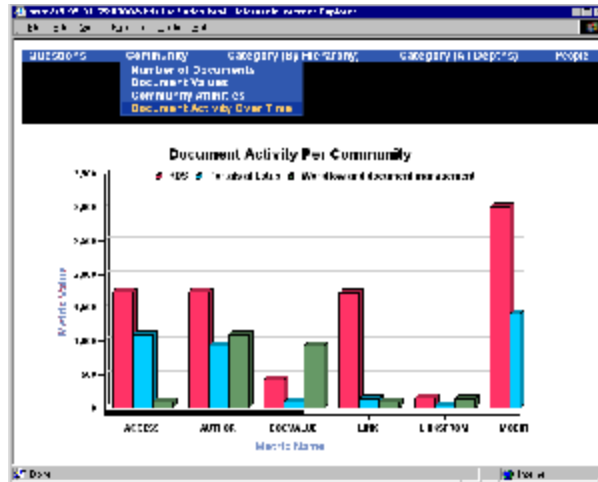
Finding documents (search)
Sensemaking (browse)
Content valuation



Finding documents (search)
Sensemaking (browse)
Content valuation
Finding expertise



Sensemaking (browse)
Content valuation
Finding expertise
Intellectual Property management



■ Supported today ■ In process ■ Planned

	Websphere Portal	Quickplace	ND6	other IBM SWG/ISV	Other Integration	3rd party vendors
Lotus Discovery Server (Search, Expertise, Taxonomy)	<ul style="list-style-type: none"> Portlets 2.01 portlet Affinity -> Personalization server integration 	<ul style="list-style-type: none"> Use LDS to organize + locate QP content 	<ul style="list-style-type: none"> Use email to mine for expertise affinities Works with ND6 DBs 	<ul style="list-style-type: none"> DB2 WAS Java 	<ul style="list-style-type: none"> XML content Domino.Doc Spiders for PC Docs, iManage Documentum 	<ul style="list-style-type: none"> Kamoon Atomica

Person Profile EDIT: Scott Eliot

Affinities are K-map categories a person is likely to have significant knowledge about. Click an affinity link below to open the corresponding category in K-map. [More on affinities.](#)

Published Affinities

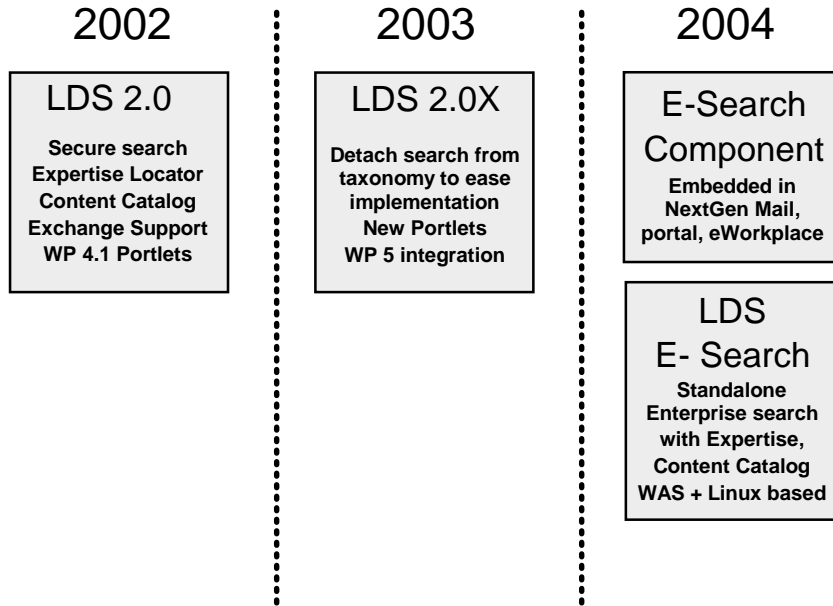
Use this section to remove currently published affinities. [More on published affinities.](#)

K-map Category	Keep	Remove
KM Articles and White Papers	<input type="checkbox"/>	<input type="checkbox"/>
Taxonomy	<input type="checkbox"/>	<input type="checkbox"/>
Knowledge Discovery	<input type="checkbox"/>	<input type="checkbox"/>
KM Competitive	<input type="checkbox"/>	<input type="checkbox"/>
Digital Dashboard	<input type="checkbox"/>	<input type="checkbox"/>

Declaring Affinities

To declare an affinity for a K-map category: open K-map, open the category, click Actions, and choose "Add Category to Profile as Affinity." [More on declaring affinities.](#)

Discovery Platform Roadmap



Example Reference Architecture - KNIC

- WW system to manage intellectual capital
- Uses multiple Lotus products
- Currently deployed to 1000 users within IBM Software Services (ISSL) for Lotus
- Key concepts apply to a variety of applications (1 to many mapping)



