

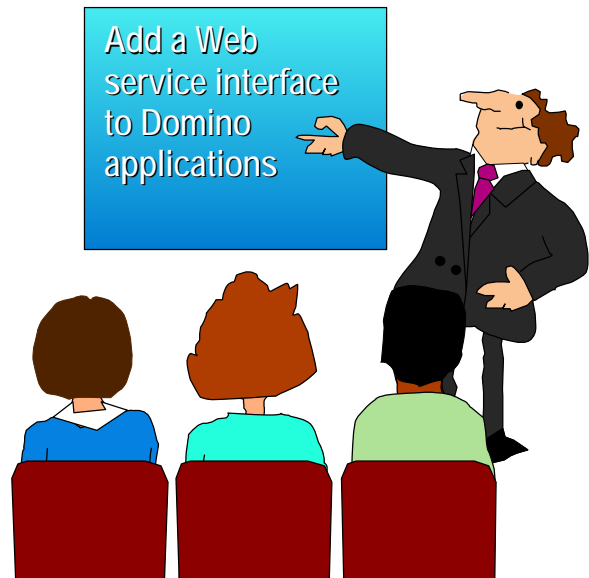


Domino a WebServices



Agenda

- Value of Domino applications
- Web services
- Web services and Domino applications



Lotus Software

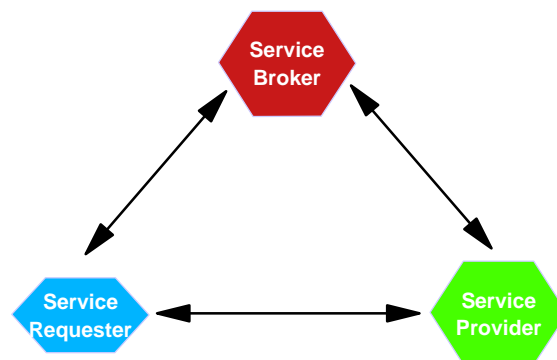
- Lotus Domino
 - Integrated messaging and Web application software platform
- Lotus Notes and iNotes
 - E-mail, calendaring, group scheduling, Web access and information management client
- Lotus Domino Designer
 - Rapid application development and deployment
- Lotus Domino Administrator
 - Administer Notes and Domino with the client or the Web administrator
- Knowledge Management
 - Lotus Discovery Server, Workflow, Domino.Doc, and Extended Search
- Sametime
 - Real-time collaboration with chat, whiteboarding and application sharing
- QuickPlace
 - Team collaboration for discussions, documents, tasks, etc. for projects and ad-hoc initiatives
- LearningSpace
 - Distance learning platform integrating live, asynchronous and self-paced content delivery

Value of Domino Applications

- Multiple clients
 - Notes
 - Browser
 - Mobile (phone/pda)
 - Web Service Clients (R5)
- Off-line support
- Integrated Infrastructure
 - Database
 - Directory/Security
 - Application server
 - Multi-platform
 - Distributed environment
 - Web hosting
 - Mail/Calendar
 - Administration
- Rapid Application Development and Deployment (RADD)
 - Templets, Forms, Views, Pages, Agents, Actions, Items...
 - BASIC (LotusScript), HTML, Java, Javascript, COM, CORBA, XML...
 - Replication, Cross platform
 - Refresh/Replace Design

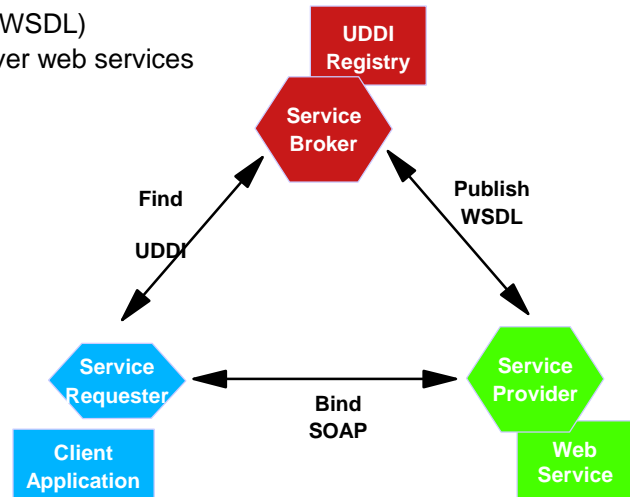
Web Services

- Web Services are applications that expose methods that can be called by other applications over the Internet
- Web services can be mixed and matched with other Web services to create innovative products, processes, and value chains
- Web services will transform the Internet into a universal software platform that contains a massive API formed by millions of Web methods written by companies all over the world



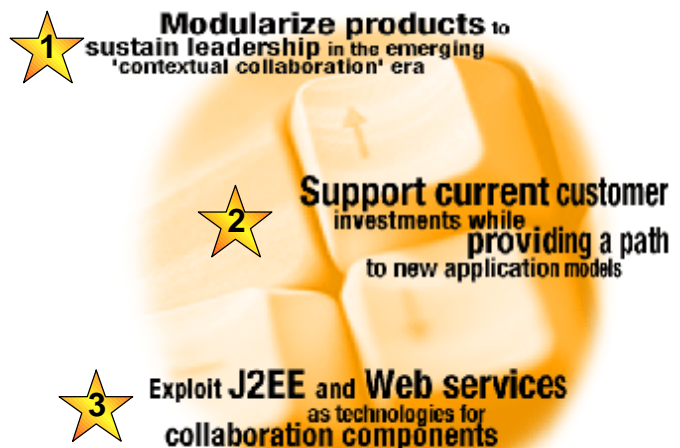
Web Services Framework

- Protocol to transport service requests and responses
 - Simple Object Access Protocol (SOAP)
- Common language to describe a web service
 - Web Services Description Language (WSDL)
- Global YellowPage to publicize and discover web services
 - Universal Description, Discovery & Integration (UDDI)



Lotus Technology Strategy

IBM Lotus is engaged in a managed evolution of existing products, from freestanding infrastructure applications to mix and match capabilities that add collaborative power to J2EE/multi-tier applications

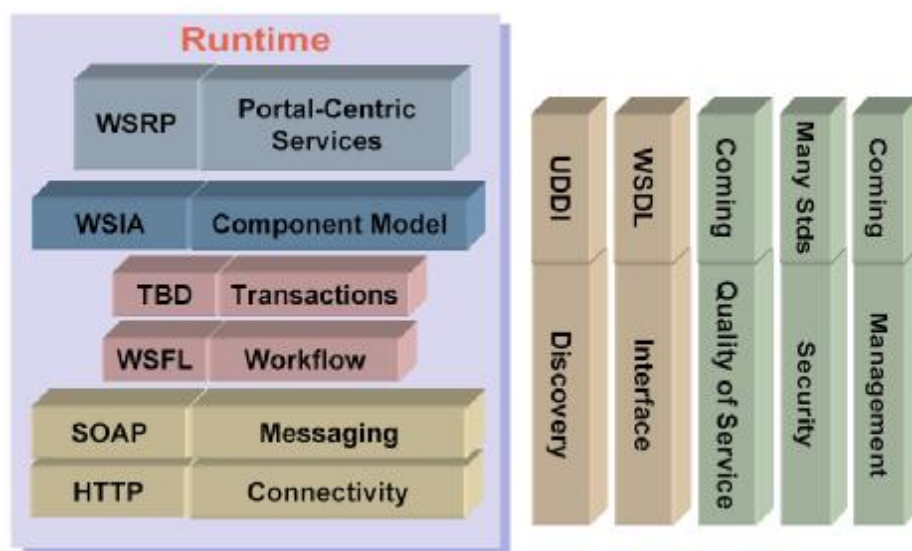


Domino and Web Services

- WebSphere server/portal front-end for Domino Web service
- .NET front-end for Domino Web service
- Developing an architecture to get access to Domino business logic
- End-to-end integration
- Platform independence
- Easy programming model
- Choice of programming languages - Java or LotusScript
- Process-to-process communication over the net
- Open standards - Web service



The Web Services Protocol Suite



Some Real Web Services - United States

- Barnes and Noble Price Quote
 - returns price of a book at BN.com given an ISBN number
- eBay Price Watcher
 - checks current bid price of an eBay auction
- California Traffic Conditions
 - California highway conditions
- Weather Conditions
 - returns the weather for cast for a zip code
- Domino Calendar Lookup
 - returns calendar entries



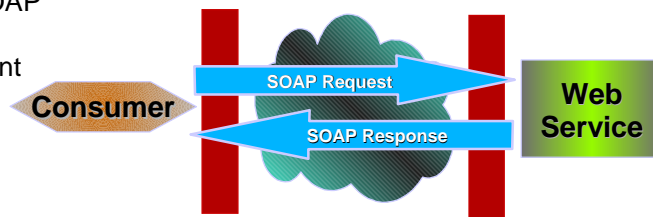
Some

- NTT Co
- UDI
- Lau

The screenshot shows the UDDI Business Registry website. At the top, there are navigation links for '個人のお客様' (Individual Customers), '法人のお客様' (Corporate Customers), '公共のお客様' (Public Customers), and '企業情報' (Company Information). Below this, there are search options for '企業向けニーズ' (Needs for Companies), 'B2B向けニーズ' (B2B Needs), 'B2C向けニーズ' (B2C Needs), 'サービス分類で探す' (Search by Service Classification), and 'キーワードで探す' (Search by Keyword). The main heading is 'UDDI BUSINESS REGISTRY' with the tagline 'Universal Description, Discovery and Integration'. Below the heading, there is a paragraph in Japanese: 'NTTコミュニケーションズ(株)が運営するUDDIビジネスレジストリです。' (This is the UDDI Business Registry operated by NTT Communications Co., Ltd.). A date announcement states: 'NTTコミュニケーションズ UDDIビジネスレジストリは2002年10月にオープンしました。' (The NTT Communications UDDI Business Registry opened in October 2002). There is a 'ログインはこちら' (Login here) button. A navigation bar includes 'サービス概要' (Service Overview), '特長' (Features), 'リリースノート' (Release Notes), 'FAQ', and 'URL'. The main text reads: 'UDDIによってビジネスがよりSpeedyに、よりDynamicに生まれ変わります。' (UDDI makes business faster and more dynamic). A note below says: 'UDDIにはビジネスに必要な情報が蓄積されています。企業基本情報、サービスインターフェイス情報、アドレスの4種類です。' (UDDI has accumulated information necessary for business: company basic information, service interface information, and address information). At the bottom, a diagram illustrates the UDDI Business Registry cycle: 'Service Requester' connects to 'Dynamic Business', which connects to 'Service Provider', and 'Service Provider' connects back to 'Service Requester'. The central text in the diagram is 'UDDI Business Registry' and 'Dynamic Business'. The actions are labeled as 'Find Services', 'Publish Services', and 'Do Business'.

How Web Services Work

- The consuming application
 - Constructs a method call with parameters
 - Formats the call as XML/SOAP text
 - Sends it via HTTP POST
- Hosting application
 - Unwraps the SOAP request
 - Runs the requested Method
 - Wraps the result in a SOAP response
 - Sends the SOAP to Client
- The consuming application
 - Unwraps the SOAP response
 - Reads the result



SOAP Protocol - Request

```

<SOAP-ENV:Envelope
  xmlns:SOAP-ENV=
    "http://schemas.xmlsoap.org/soap/envelope/"
  xmlns:xsi="http://www.w3.org/1999/XMLSchema-instance"
  xmlns:xsd="http://www.w3.org/1999/XMLSchema">
<SOAP-ENV:Body>
  <ns1:getPrice
    xmlns:ns1="urn:xmethods-BNPriceCheck"
    SOAP-ENV:encodingStyle=
      "http://schemas.xmlsoap.org/soap/encoding/">
    <isbn xsi:type="xsd:string">0439139597</isbn>
  </ns1:getPrice>
</SOAP-ENV:Body>
</SOAP-ENV:Envelope>
    
```

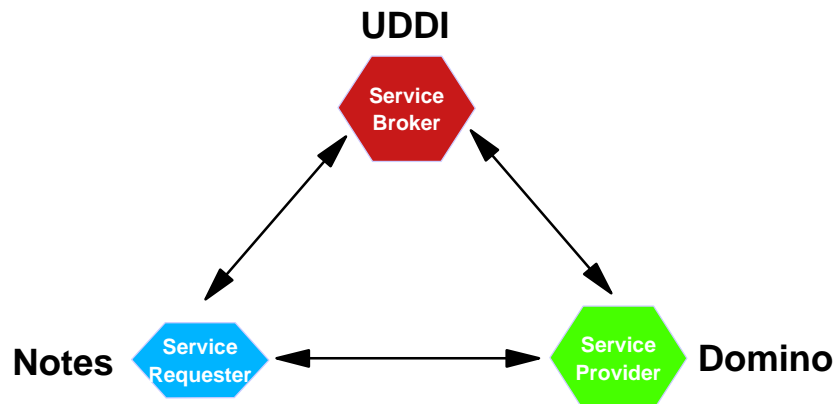
SOAP Protocol - Response

```

<SOAP-ENV:Envelope
  xmlns:SOAP-ENV=
    "http://schemas.xmlsoap.org/soap/envelope/"
  xmlns:xsi="http://www.w3.org/1999/XMLSchema-instance"
  xmlns:xsd="http://www.w3.org/1999/XMLSchema">
<SOAP-ENV:Body>
  <ns1:getPriceResponse
    xmlns:ns1="urn:xmethods-BNPriceCheck"
    SOAP-ENV:encodingStyle=
      "http://schemas.xmlsoap.org/soap/encoding/">
    <return xsi:type="xsd:float">15.57</return>
  </ns1:getPriceResponse>
</SOAP-ENV:Body>
</SOAP-ENV:Envelope>
  
```

How Can Lotus Domino Work with Web Services?

- Consuming a Web services
- Hosting a Web services



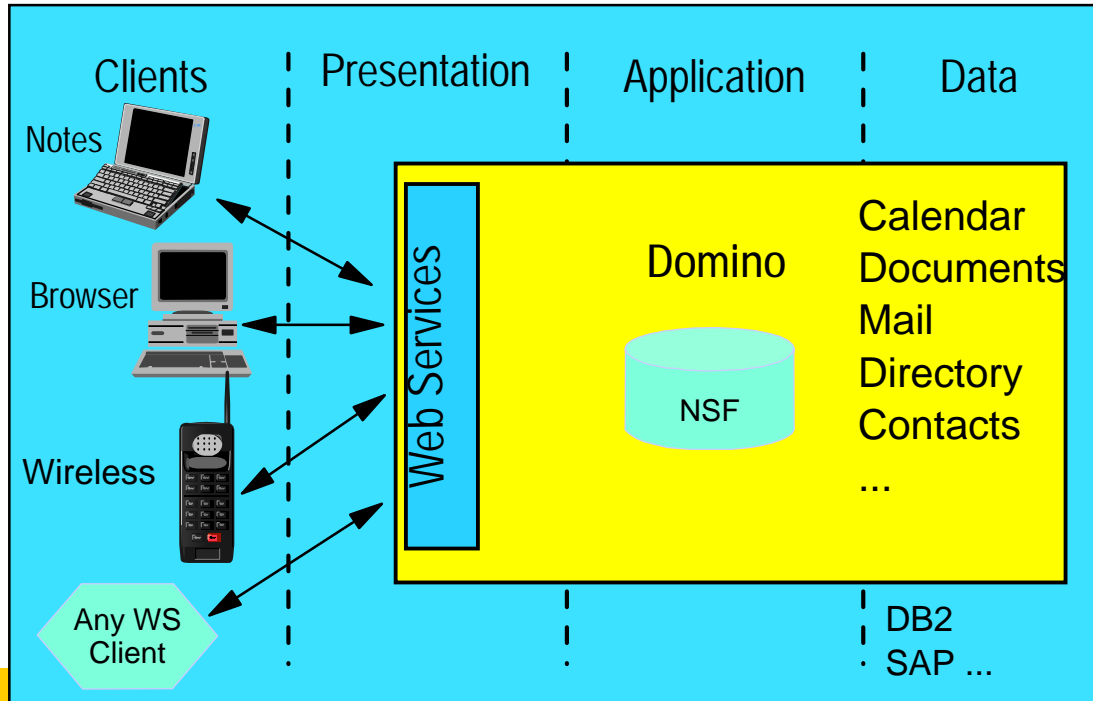
Consuming a Web services - Notes/Domino

- SOAPConnect
 - Free utility from Lotus
 - Hides Java from the developer
 - Step-by-step tutorial explains setup
- Java classes - (SOAP4J)
 - LotusScript calling Java (LS2J Domino 6)
 - Java Agents (Domino Rrelease 5 and 6)
- LotusScript calling Microsoft Objects (Windows Only)
 - MS SOAP Toolkit
 - .Net client objects

J2EE and Domino and .NET

- All Host and Consume Web Services
- Domino can call a J2EE Web service application
- Domino can call a .NET Web service application
- J2EE can call a Domino Web service application
- Examples
 - Domino Calendar accessed from J2EE
 - Domino calling a J2EE transactional process via a web service
 - J2EE application calling a work flow application in Domino
 - Notes retrieving J2EE information to use off-line

Lotus Centric Architecture



Domino Web Service Database

```

Dim response As String
Dim incoming As String
Sub Initialize
Dim session As New NotesSession
Set doc = session.DocumentContext
'set the output content type to XML
Print "Content-Type: text/xml"
'get incoming SOAP message
incoming = doc.GetItemValue("Request_content")(0)
...
    
```

Log Message for Debugging

```
...  
'log incoming message  
LogMessage(incoming)  
'remove all whitespace from incoming SOAP message  
incoming = RemoveWhitespace(Fulltrim(incoming))  
...
```

Parse SOAP Message

```
...  
On Error Goto Errhandle  
bodyPos= Instr(1,incoming,|<SOAP-ENV:Body>|)+15  
'parse out method signature  
methodSigPos= Instr(bodyPos,incoming,|<|)+1  
methodSigEnd=Instr(bodyPos,incoming,| |)  
methodSignature = Mid(incoming,methodSigPos,(methodSigEnd-methodSigPos))  
'parse out method name  
methodPos= Instr(bodyPos,incoming,|:|)+1  
methodEnd=Instr(methodPos,incoming,| |)  
methodName = Mid(incoming,methodPos,(methodEnd-methodPos))  
'parse out namespace  
nameSpacePos= Instr(methodEnd,incoming,|uri:|)+4  
nameSpaceEnd=Instr(nameSpacePos,incoming,|")|)  
nameSpace=Mid(incoming,nameSpacePos,(nameSpaceEnd-nameSpacePos))  
...
```

Namespace and Method

```

...
'Build a string containing the script library, function, and incoming soap message
'The nameSpace variable contains the script library to load
callString = |Use | & "|" & nameSpace & "|" & |
response = | & methodName & |(incoming)|
'execute the function
Execute callString
...

```

Send Response back to SOAP Client

```

...
'create response
strTmp = |<?xml version="1.0" encoding="UTF-8" standalone="no"?>| & _
|<SOAP-ENV:Envelope xmlns:SOAP-ENV="http://schemas.xmlsoap.org/soap/envelope/" & _
xmlns:xsi="http://www.w3.org/2001/XMLSchema-instance" & _
xmlns:xsd="http://www.w3.org/2001/XMLSchema">| & _
|<SOAP-ENV:Body>| & _
|<m:| & methodName & "Response" & | xmlns:m="uri:" & nameSpace & |"
SOAP-ENV:encodingStyle="http://schemas.xmlsoap.org/soap/encoding/">| & response & _
|</m:| & methodName & |Response>| & _
|</SOAP-ENV:Body>| & _
|</SOAP-ENV:Envelope>|
'send back SOAP response
Print strTmp

```

Domino Script Library and Function

```
Dim domParser As NotesDOMParser
Function ISBNSearch(msg As String) As String
Dim session As New NotesSession
Dim rootElement As NotesDOMDocumentNode
Dim nodeList As NotesDOMNodeList
Dim node As NotesDOMNode
...
```

Domino Script Library and Function

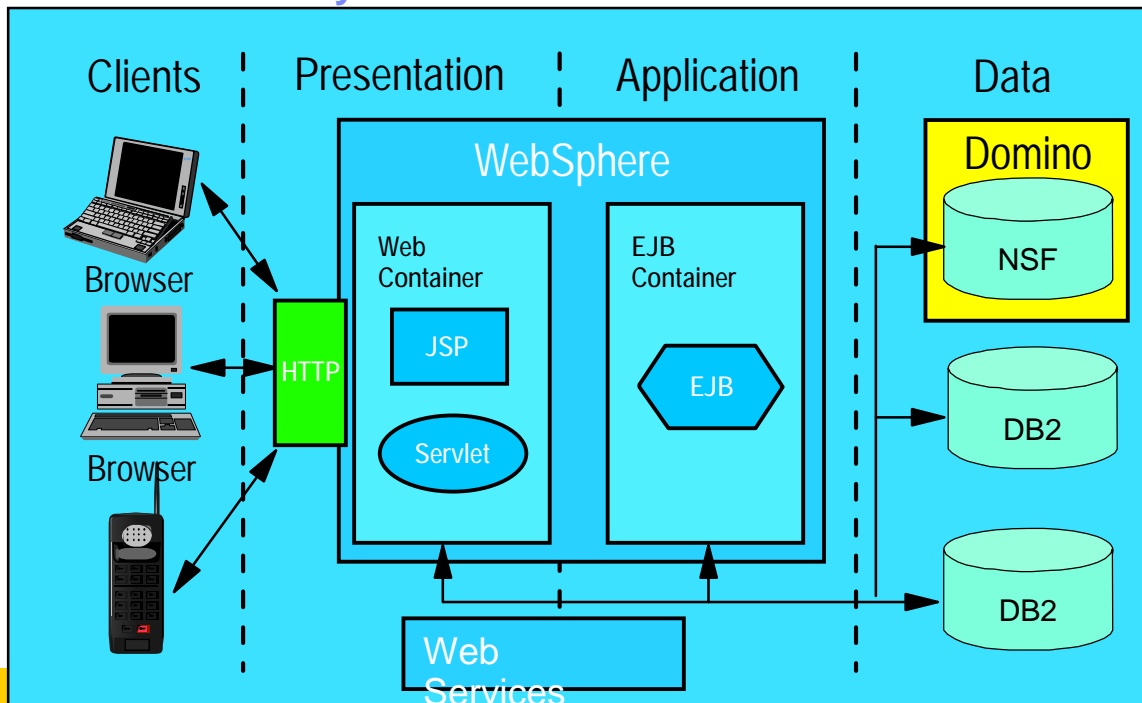
```
...
'create dom parser to process SOAP message
Set domParser = session.createDOMParser(msg)
domParser.process
Set rootElement = domParser.Document
Set nodeList = rootElement.GetElementsByTagName("*")
'locate ISBN
For i=1 To nodeList.NumberOfEntries
  Set node = nodeList.GetItem(i)
  If (node.NodeName="isbn")Then
    ISBN = node.FirstChild.NodeValue
    Exit For
  End If
Next
...
```

Perform Business Logic

```

...
Dim db As NotesDatabase
Dim view As NotesView
Dim doc As NotesDocument
Set db = session.CurrentDatabase
Set view = db.getView("ByISBN")
'locate ISBN in database
Set doc = view.GetDocumentByKey(ISBN,True)
'create response
tmp = <isbn xsi:type="xsd:string">| & doc.ISBNTX(0) & </isbn>|&_
|<title xsi:type="xsd:string">| & doc.TitleTX(0) & </title>|&_
|<price xsi:type="xsd:string">| & doc.ListPriceNU(0) & </price>|&_
|<authors xsi:type="xsd:string">| & doc.AuthorsTX(0) & </authors>|&_
|<publisher xsi:type="xsd:string">| & doc.PublisherTX(0)
& </publisher>|&_
|<copies xsi:type="xsd:string">| & doc.CopiesTX(0) & </copies>|
ISBNSearch = tmp
End Function
    
```

Domino Hosted by J2EE Web Services



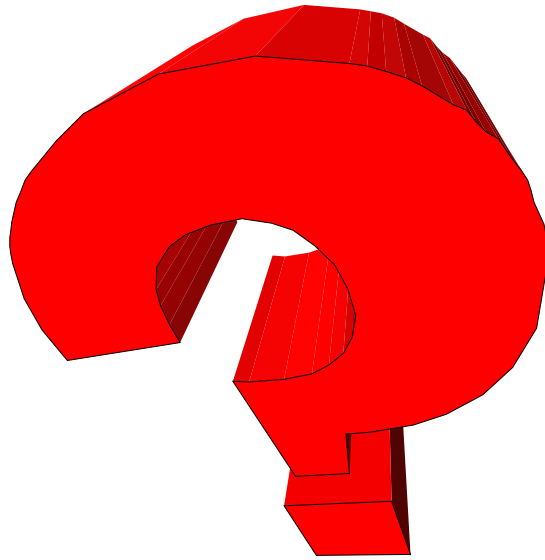
Summary

- XML/SOAP/Web Services are:
 - Platform/OS/language independent
- Lotus Domino/Notes can consume and provide web services! Today!
- It's easy to add a Web service interface to Domino applications- R5 and up
- Many tools for working with WS
- Domino Web Services can use Java (think Web Sphere), .Net (COM), or 100% Domino
- BASIC language Web Service that's cross platform (better than .Net)
- Java skills not required
- Web Services will be popular
- It's not hard

Resources

- www.lotus.com/ldd
- www.alphaworks.ibm.com
- www.webservices.org
- www.uddi.org
- www.apache.org
- www.e-ProMag.com/garyspage
- www.advisormedia.com/Articles.nsf/aid/DEVEG02

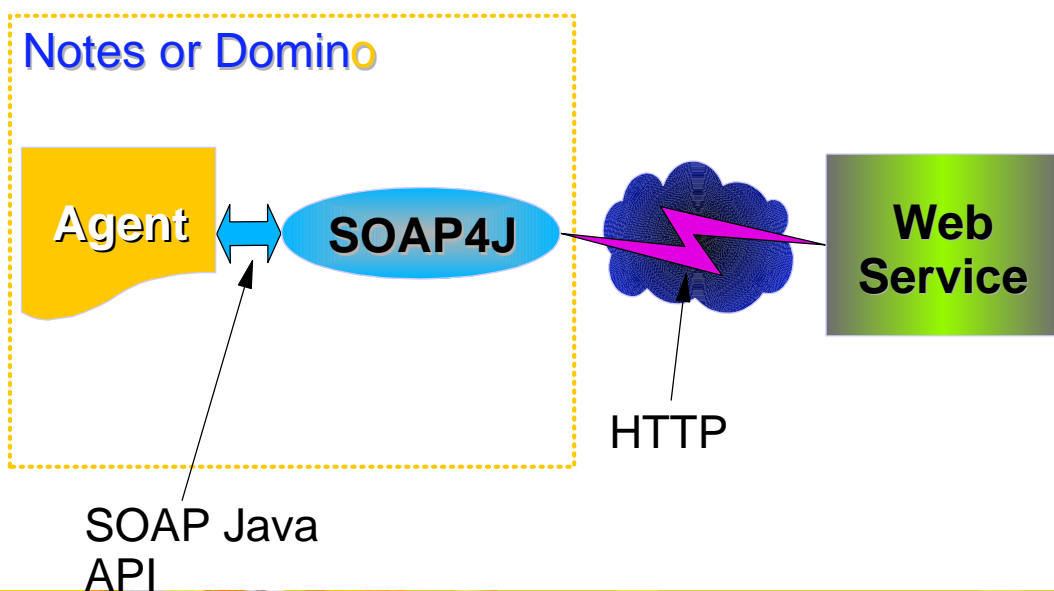
- www.ibm.com/developerworks
- Tutorials
 - "Turn your Lotus applications into Web services"
 - "Hosting Web Services on Domino"



Course Abstract

- Web services is the new way of connecting applications via HTTP. Come and see how to expose a Domino application as a Web service. 35 lines of LotusScript is all you need. See code demos that extend Domino applications to with WebSphere or .NET. It's very easy.

Consuming a WS with Java or LS2J



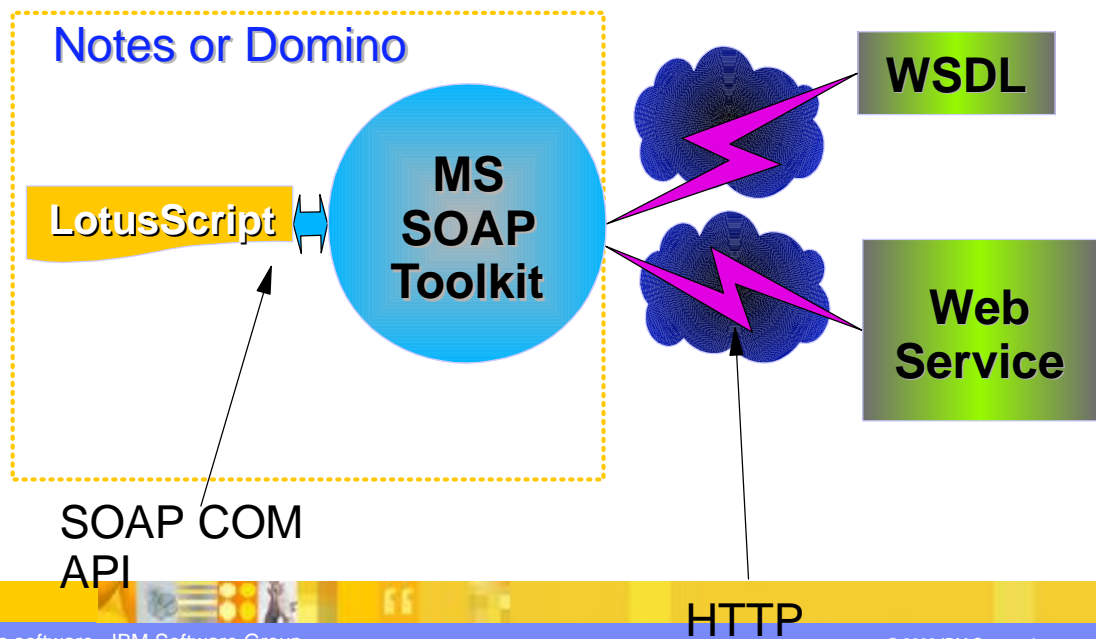
How it works

- Form in Designer...
- Calls SOAP4J,MS Toolkit or SOAP Connect to build and send request...
- Response comes back...
- Extracted information from response...
- Updated Lotus Notes document...

Web Service Description Language (WSDL)

- XML file
- Describes the service
 - Methods
 - parameters
 - data types
 - URL of the service
 -

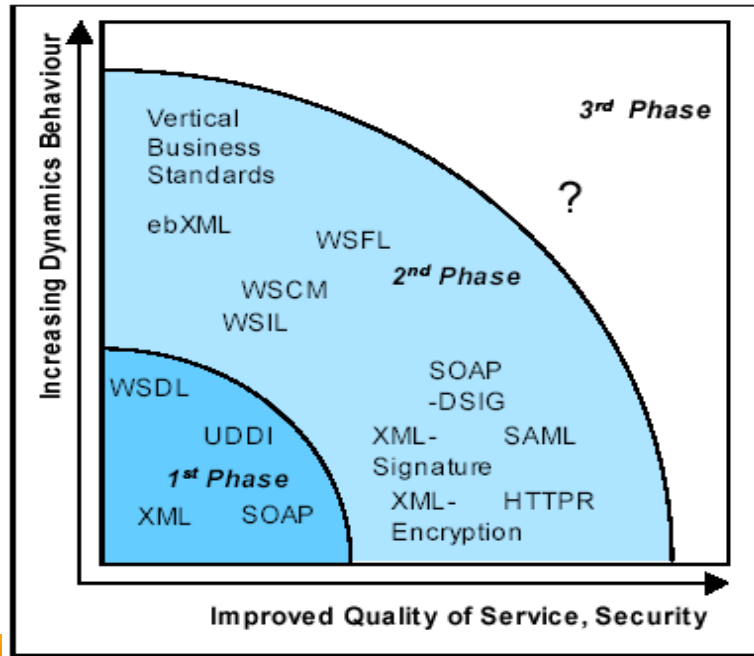
Consuming a WS with COM (Windows only)



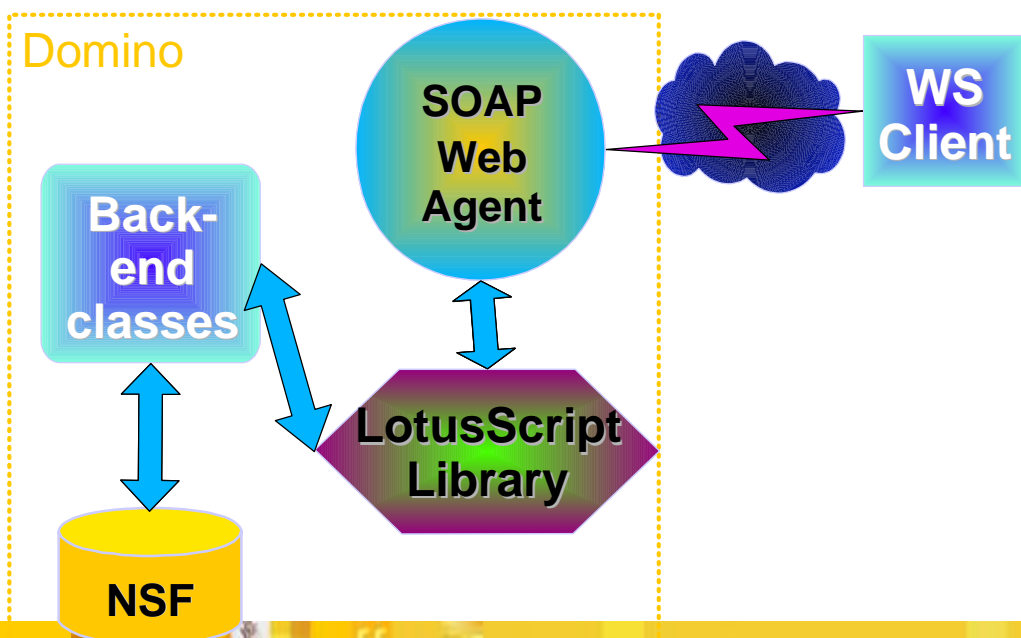
SOAPConnect for LotusScript

- Free utility
- LotusScript Library
- Java Agent
- R5 and release 6

Evolving Standard for Web service



Providing a Lotus Domino WS - 100% Domino



Web Services Agent

Sub Initialize

```

Dim s As New notesession
Dim doc As NotesDocument
Set doc = s.DocumentContext
SOAPin= doc.GetItemValue("Request_content")(0)
Print "Content-Type: text/xml"
On Error Resume Next
bodyPos= Instr(1,SOAPin,<SOAP-ENV:Body>)+15
methodPos= Instr(bodyPos,SOAPin,|:|)+1
methodEnd=Instr(methodPos,SOAPin,| |)
MethodName = Mid(SOAPin,methodPos,(methodEnd-methodPos))
nameSpacePos= Instr(methodEnd,SOAPin,|uri:|)+4
nameSpaceEnd=Instr(nameSpacePos,SOAPin,|")

NameSpace=Mid(SOAPin,nameSpacePos,(nameSpaceEnd-nameSpacePos))
argPos=Instr(nameSpaceEnd,SOAPin,|>|)+3
argEnd=Instr(argPos,SOAPin,|<|)
argValue= Mid(SOAPin,argPos,(argEnd-argPos))

```

Web Services Agent (cont.)

'The NameSpace will be the name of the Script Library to load

'The MethodName will be the name of the function in the

Script

'Library loaded by this agent (NameSpace)

LSlib = NameSpace

Parameter = argValue

MyFunction = MethodName

Library= "|" & LSlib & "|"

Arg= "(" & Parameter & "|")

' load the right LotusScript Library and call the function

CallString = |Use | & Library & |

response = | & MyFunction & Arg

Execute CallString

Web Services Agent (cont.)

```

strTmp = |<?xml version="1.0" encoding="UTF-8" standalone="no"?>| & _
|<SOAP-ENV:Envelope xmlns:SOAP-ENV="http://schemas.xmlsoap.org/soap/envelope/">|
& _
|<SOAP-ENV:Body>| & _
|m:| & MethodName & "Response" & | xmlns:m=" | & Namespace & "|">| & _
|<Answer>| & response & |</Answer>| & _
|</m:| & MethodName & |Response>| & _
|</SOAP-ENV:Body>| & _
|</SOAP-ENV:Envelope>|

Print strTmp
End Sub
    
```

Providing a Lotus Domino WS - 100% Domino

